

# ScanSnap

Color Image Scanner

## S300

Organize your business. Organize your life.



Speedy double-sided colour scanning at 8 pages per minute

AC powered or USB bus powered for ultra portability

10 page automatic document feeder

One button scanning to PDF, searchable PDF, or JPEG

Scan to email, scan to print, and scan to SharePoint

Organize and search documents and business cards

### Productivity Software Bundle:

- ScanSnap Manager v4.2
- ScanSnap Organizer v3.2
- PFU CardMinder v3.2
- OrganizeMY™ Electronic Filing Cabinet For Dummies®

**FREE 1 Year Warranty Plus Exchange**

**FUJITSU**

THE POSSIBILITIES ARE INFINITE

# ScanSnap

Color Image Scanner  
S300

A simple to use, ultra-portable, duplex colour scanner with "one touch to PDF" technology.

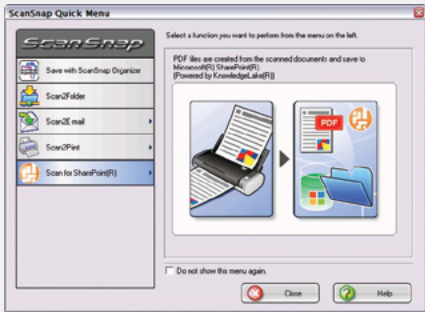
### Fast Duplex Colour Scanning

- 8 doubled sided pages per minute. (16 images per minute)
- 10 page automatic document feeder.

### User Friendly & Convenient

- Scan to PDF or JPEG with one touch.
- Auto detects paper size: business card to legal.
- Auto corrects skewed images.
- Auto deletes blank pages.
- Automatic page orientation.
- Auto detects black & white or colour documents.

### Easy to use "Quick Menu"



### Organizes Documents & Business Cards

- Manage your scanned documents with ScanSnap Organizer.
- Automatically convert scanned images to text searchable PDF.
- Automatically extract contact information from business cards. Export card data to popular contact management software.
- Scan to email: PDF or JPEG attachments.

### Get Organized

- Organize receipts, tax documents, recipes and more.

Organize MY™  
Electronic Filing Cabinet FOR DUMMIES

### Space Saving, Portable Design

- Approximately 11.2" wide, 3.2" high, and 3.8" deep.
- Security Port to lock down scanner.
- Portability - ScanSnap carrying case available.

### Warranty Plus

- 1 year premium warranty coverage.
- Advance exchange anywhere in Canada.

Visit [www.fujitsu.ca/scansnap](http://www.fujitsu.ca/scansnap) for more details.

Whether you are organizing your household, running a home office or working on the road, the ScanSnap S300 will provide order to your paper chaos.

Mobile professionals, who need to scan contracts, receipts and other documents while traveling, benefit from the S300's light weight, compact size and USB bus power support.

For the home office, ScanSnap S300 comes bundled with ScanSnap Organizer for managing your business documents, CardMinder for managing your business cards and QuickMenu for simple Scan to Email, Scan to Folder and Scan to Print capabilities.

The Electronic Filing Cabinet for Dummies software will look after your personal life. Receipts, statements, tax documents, warranty cards and even your recipes can all

be organized and available when you need them.

**ScanSnap S300. Organize your business. Organize your life.**



### TECHNICAL SPECIFICATIONS

<b>Scanner type</b>	ADF (Automatic Document Feeder); Duplex colour scanning
<b>Scanning modes</b>	Colour / Black & white / Automatic (colour/black & white detection)
<b>Scanning speed<sup>1</sup> (AC powered)</b>	Normal mode: 8 pages/min. (duplex / simplex, colour 150 dpi, black & white 300 dpi) Better mode: 6 pages/min. (duplex / simplex, colour 200 dpi, black & white 400 dpi) Best mode: 4 pages/min. (duplex / simplex, colour 300 dpi, black & white 600 dpi) Excellent mode: 0.5 pages/min. (duplex / simplex, colour 600 dpi, black & white 1200 dpi)
<b>Scanning speed<sup>1</sup> (USB bus powered)</b>	Normal mode: 4 pages/min. (duplex / simplex, colour 150 dpi, black & white 300 dpi) Better mode: 3 pages/min. (duplex / simplex, colour 200 dpi, black & white 400 dpi) Best mode: 2 pages/min. (duplex / simplex, colour 300 dpi, black & white 600 dpi) Excellent mode: 0.5 pages/min. (duplex / simplex, colour 600 dpi, black & white 1200 dpi)
<b>Paper size</b>	Automatic paper size detection from business cards up to Legal size
<b>Paper weight</b>	17 to 28 lb
<b>Feeder capacity</b>	Maximum 10 sheets (letter, 20 lb)
<b>Interface</b>	USB 2.0 (USB 1.1 compatible)
<b>Driver<sup>2</sup></b>	ScanSnap Manager (TWAIN / ISIS™ not supported)
<b>Output formats</b>	PDF or JPEG
<b>Dimensions<sup>3</sup></b>	284 mm (width), 95 mm (depth), 77 mm (height)
<b>Weight</b>	1.4 kg
<b>Environmental compliance</b>	EnergyStar® and RoHS

### SYSTEM REQUIREMENTS<sup>4</sup>

<b>Operating system</b>	Windows® 2000 Professional, Windows® XP <sup>5</sup> , or Windows Vista®
<b>CPU</b>	Intel® Pentium® III 600 MHz or higher Intel® Pentium® 4 1.8 GHz or higher for Windows Vista® (Intel® Celeron® M 430 1.73 GHz or higher recommended)
<b>System memory</b>	256 MB or higher (512 MB or higher recommended)
<b>Hard disk capacity</b>	At least 920 MB necessary for installation
<b>Optical drive</b>	A CD-ROM drive required for software installation
<b>Interface port</b>	USB 2.0 / USB 1.1 port

### IN THE BOX

<b>Hardware</b>	ScanSnap S300 unit USB cable (2 m) AC adapter USB bus power cable Getting started guide
<b>Bundled software</b>	ScanSnap Manager v4.2 ScanSnap Organizer v3.2 PFU Card Minder v3.2 OrganizeMY™ Electronic Filing Cabinet For Dummies®



As an EnergyStar® partner, Fujitsu has determined that this product meets the EnergyStar® guideline for energy efficiency.

- 1) Scanning speeds may vary due to the system environment used.
- 2) TWAIN or ISIS™ applications cannot be used directly. These applications can be launched by ScanSnap if they support PDF or JPEG file types.
- 3) When hopper is closed.
- 4) Scanning speed slows down when recommended requirements are not met.
- 5) With Service Pack 1 or higher.

Fujitsu and the Fujitsu logo are registered trademarks of Fujitsu Limited. ScanSnap is trademark of PFU Limited. Adobe, Acrobat, Adobe PDF logo are either registered trademarks or trademarks of Adobe Systems Incorporated in the United States and/or other countries. All the other trademarks mentioned herein are the property of their respective owners. Specifications are subject to change without notice.  
© 2007 Fujitsu Canada, Inc. All rights reserved. FCI-11.20.2007-E

# FUJITSU

THE POSSIBILITIES ARE INFINITE