

Océ Print Exec® Workgroup

Software data



Print Exec Workgroup 1.4.2

Web-enabled job creation and submission software

Océ Print Exec® Workgroup is the powerful, smart and efficient solution for the total printing process. From web-based document selection and submission right through to management and handling of physical documents.

Direct status information

Printer

- Printer name, printer description, printer location, contact, supported printer languages, status

Media

- Roll, tray, media type, status

Print and inbox queue

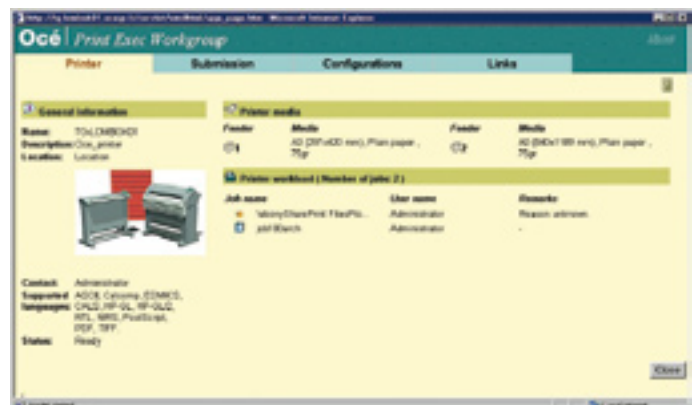
- Number of jobs, job name, user name, remarks

Dynamic GUI

- Dynamic GUI according to actual device configuration (e.g. present folding settings only if a folder is present)

Automatic job verification

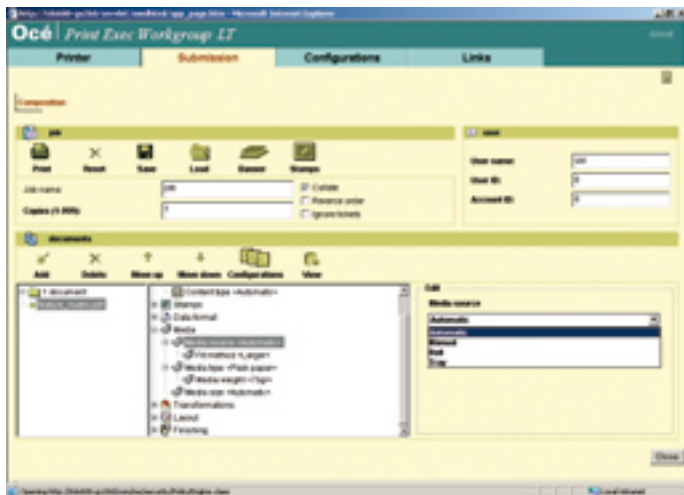
- Automatic job verification upon submission (e.g. warning if requested media is not loaded or if toner is low)



Print Exec Workgroup 1.4.2

Job settings

- Job name
- # Copies (1 - 999)
- Collate
- Reverse order
- Ignore tickets
- Accounting: account ID, user ID
- Send to inbox
- Banner page on set, job or document level
- Stamps
- Store and retrieve jobs
- Document re-ordering



Document settings

General

- Add up to 100 documents from file system, Doc Exec archive or scan-to-file area
- Multiple file selection, drag&drop
- #Copies
- Collate
- Content type (device dependent automatic, standard, text, poster)
- Document stamps (create, load, apply)

Data format

- Automatic file format recognition, same technology as printer
- Preferred format(ASCII, Calcomp, CALS, EDMICS/C4, HP-GL, HP-GL/2, PDF, HP-RTL, JPEG (TDS450 and TCS500 only), PostScript, TIFF, NIRS)
- File format settings (pen settings, origin, merge control, etc).

Media (device dependent)

- Source (automatic, roll, tray, manual)
- Fit method (exact, larger, best fit),
- Type (automatic, plain, vellum, transparent, polyester, etc.)
- Weight (64gr, 75gr, 110gr, etc.)
- Size (automatic, Ao-A4, E-A, E+-A+, B1 (din/carto), B2 (din/carto), 30")

Transformations

- Zoom (25%-400%, to media size, custom anisotropic, custom isotropic, to ISO/ANSI/ARCHI)
- Rotate (portrait, landscape, productive, media saving, 0, 90, 180, 270 degrees)
- Mirror (off, horizontal)

Layout

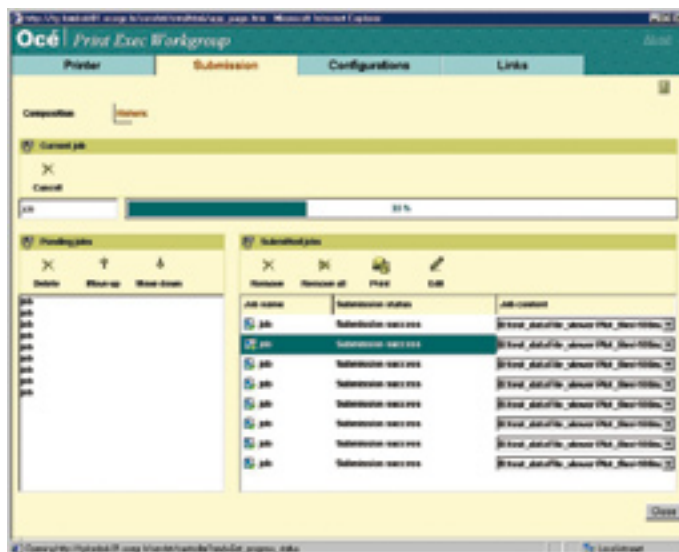
- Alignment (as on machine, center, upper left, center top, upper right, center left, center right, lower left, center low, lower right)
- Horizontal shift (right/left, 0-914mm)
- Vertical shift (up/down, 0-1219mm)
- Leading edge (add/remove, 0-400mm)
- Trailing edge (add/remove, 0-400mm)

Finishing (device dependent)

- Cut method (on image size, on page size, custom 279-15000mm)
- Deposit (integrated receiving tray, copy delivery tray)
- Fold (off, full, first fold only), method (standard, Afnor, Ericsson), orientation (automatic, portrait), width (186-230mm), length (276-310mm)
- Binding edge (15-30mm)
- Reinforcement
- Deposit (stacker, lower belt, upper belt, both belts)

Submitted job overview

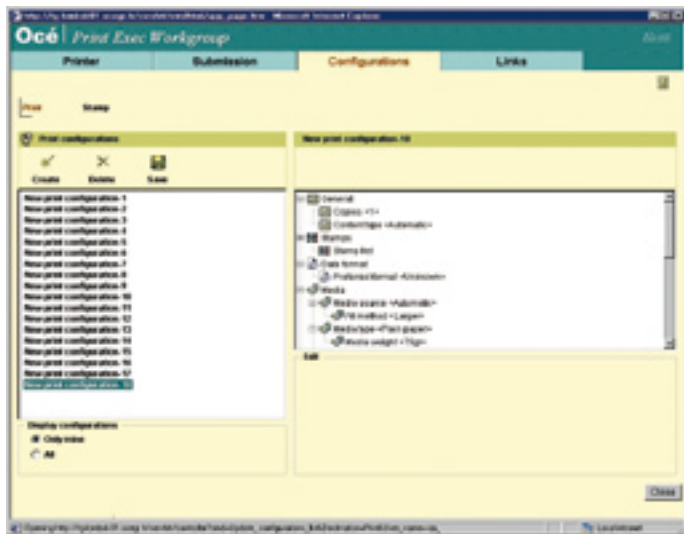
- Current job submission progress
- Pending jobs re-ordering
- Re-print jobs
- Edit jobs
- Background job submission
- Automatic submission re-trial



Print Exec Workgroup 1.4.2

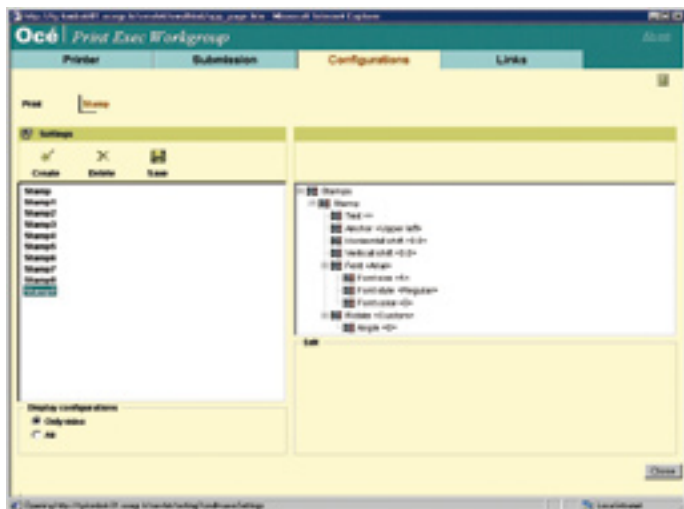
Configurations (document settings)

- Create, Save, Delete up to 50 configurations per user
- All document settings (see above)



Stamps

- Stamps can be freely positioned and rotated
- Create, Save, Delete up to 50 stamp definitions per user
- Settings
 - Free text and several predefined attributes
 - Anchor (9 positions)
 - Horizontal and vertical shift
 - Font: style, size, color
 - Rotate



Banner pages

- Allow on user and system level
- Allow on set, job, document level
- Include company name and logo
- Predefined templates, including free text

File preview

- Color, grey-scale, black & white files
- Same technology for viewing and printing
- Zoom: best fit, actual size, zoom in, zoom out
- Rotate
- Document information: name, size, zoom factor, rotation

Direct hot links to

- www.oce.com
- Scanned documents download
- Software download (Océ, Java)
- Administration (activation, upgrade, patch, back-up & restore)

Localization

- English US, French, German, Italian, Spanish, Portuguese, Dutch, Danish, Finnish, Swedish, Hungarian, Czech, Polish, Russian, Norwegian, Japanese, Chinese (simplified and traditional)

Supported printers

- Océ TCS400 2.2.2 and higher
- Océ TCS500 1.0 and higher
- Océ TDS400 2.0 and higher
- Océ TDS450 3.0 or higher
- Océ TDS600 4.0 and higher
- Océ TDS800 2.0 and higher
- Océ TDS860 1.0 and higher

Recommended configuration

- Microsoft Windows (2000, XP, XP 64-bits), Solaris (8 or 9), MacOS (10.2 or higher) (without viewing)
- Internet Explorer 5.0 or higher, Netscape Navigator 6.x or 7.x, Firefox 1.0 or higher
- Java Plug-in 1.4.2_07 or higher, Java Advanced Imaging 1.1.2 or higher (viewer)
- no additional hardware needed

Océ-Technologies B.V.

Venlo, The Netherlands

Page 3 of 3

